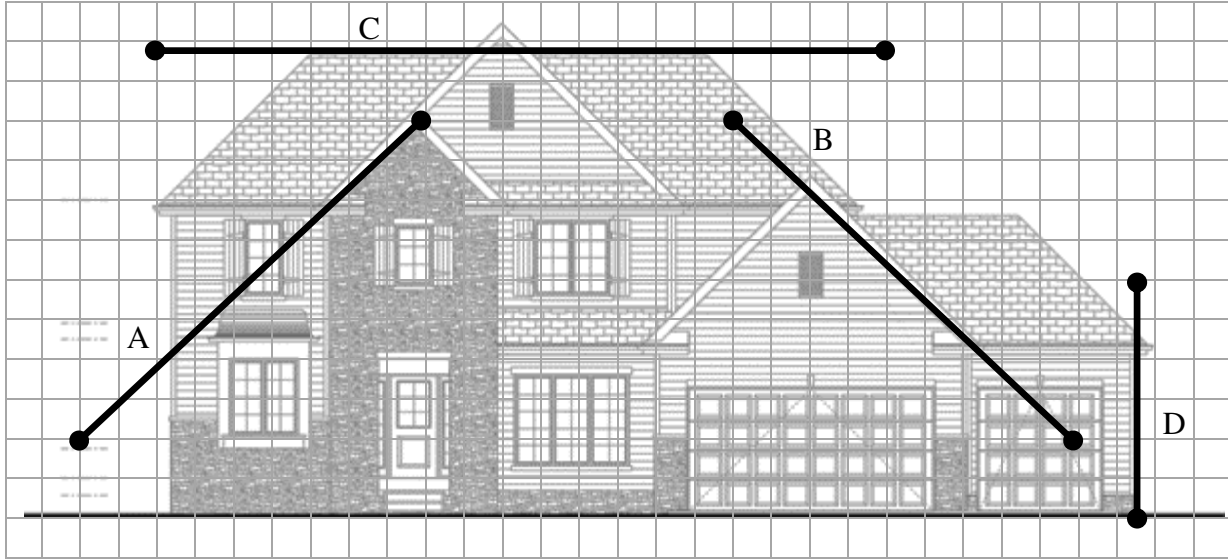
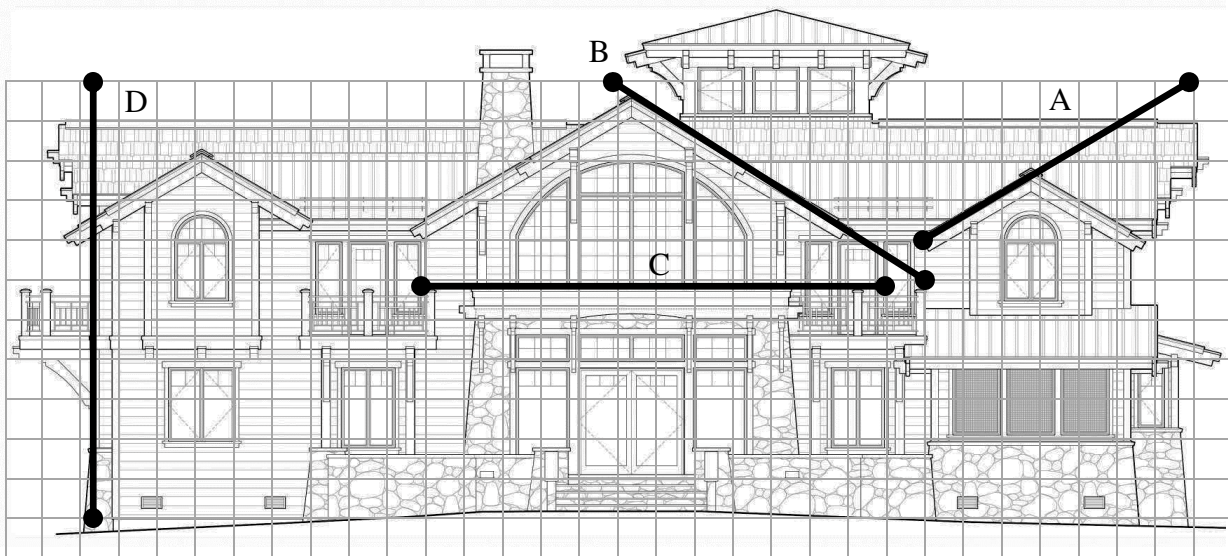


The purpose of tonight's homework is to utilize your knowledge of linear equations while looking at elevation views of homes. **For each home below** find the slopes of the four lines. Use the beginning and ending points of each line to determine the rise and the run. Calculate the slopes showing both rise and run and then simplify underneath each picture.



A	B	C	D
---	---	---	---



A	B	C	D
---	---	---	---